

> OUR SOLUTIONS INSULATING & REFLECTIVE

> ISOLPEINT

> REFLECTHERM



CM | CONCEPT
MONACO



Concept Monaco
Le ONE Monte-Carlo
6 avenue Princesse Alice
Étage 2, Bâtiment G
98000 MONACO

www.concept-monaco.com

The Solution in the Building Industry!

> FROM DESIGN TO MANUFACTURE OF TECHNICAL PRODUCTS..

Innovation and Performance

REFLECTHERM is a waterproof thermal paint specially designed for flat roofs. This white coating effectively reflects solar radiation, thus reducing rooftop overheating. In addition to its thermal properties, Reflecttherm is also waterproof and flexible, providing long-lasting protection against water. This product is eligible for government grants, making it an economical and environmentally friendly choice for commercial buildings.

ISOLPEINT is a thermal insulating and decorative resin, ideal for facades and roofs. Composed of micrometric spheres filled with air, Isolpeint provides excellent thermal insulation. In the summer, its high reflectivity blocks solar radiation, while in the winter, its low thermal conductivity slows the spread of cold. Isolpeint allows for renovation, waterproofing, and enhanced insulation in a single operation. This product is also eligible for government grants and is available in several shades to suit your aesthetic needs.

By developing innovative products such as ISOLPEINT and REFLECTHERM, CONCEPT positions itself as a leader in the field of advanced thermal solutions and strengthens its commitment to providing innovative, sustainable, and effective solutions to address current and future energy challenges.

These products represent a significant advancement in the thermal management of buildings, offering tangible benefits in terms of economic, regulatory, and environmental performance.

**Sustainability and Ecology:**

Both products are formulated with environmentally friendly materials, helping to reduce carbon footprints.

By improving energy efficiency, they reduce dependency on heating and cooling systems, thus lowering greenhouse gas emissions.

Financial Savings:

The use of Isolpeint and Reflectherm leads to significant savings on energy bills through better insulation and effective thermal management.

These products also increase the lifespan of buildings by protecting them from extreme temperature fluctuations.

Comfort and Well-being:

By maintaining stable indoor temperatures, these products enhance occupant comfort, reducing temperature fluctuations and creating a more pleasant living or working environment.

They also contribute to the health of occupants by reducing the risks of mold and moisture.

Standards and Regulations:

ISOLPEINT and REFLECTHERM, falling under the category of reflective roofing products, help provide solutions for compliance with the Tertiary Law.

CODE 1600

ISOLPEINT

Thermal Insulating and Decorative Resin

Specially for Facades and Roofs



Highlights

- Microporous
- Self-cleaning
- Enhances the appearance of materials
- Facilitates substrate cleaning
- Energy-saving
- Acts as a barrier against heat and cold

Composed of micrometric spheres filled with air, ISOLPEINT is a waterproof thermal insulating paint that provides excellent additional insulation for buildings.

ISOLPEINT allows for the renovation, waterproofing, and enhancement of roof and facade insulation in a single operation.

In the summer, the high reflectivity of ISOLPEINT blocks solar radiation and prevents heat penetration into the building.

In the winter, the low thermal conductivity of ISOLPEINT significantly slows the spread of cold. It can be applied to roofs made of porous materials such as concrete tiles, clay, fibrocement, artificial slate, as well as non-porous materials like zinc and metal coverings.

It can also be applied to facades made of poured concrete (finished surface), prefabricated concrete, single or multi-layer hydraulic render, old adhering paint, sound metal cladding, and PVC surfaces.

It can also be applied indoors to supports such as drywall, plaster, adhering paint, and ceramic tiles. Condensation treatment should be performed on the face where condensation occurs.

Available in 8 shades:
White, Coral, Tuscany, Bluish Grey, Grizzly Brown, Loire Sand, Stone Tone, and Cement Grey

> KEY QUALITIES

- Creates an effective barrier against heat and cold.
- With its waterproofing power, it delays the development of moss and dirt.
- Mirror effect: reflects solar radiation.

up to 90%, thus promoting air conditioning savings in buildings.

- Eligible for government grants for commercial tertiary buildings.
- Provides thermal comfort indoors.
- Treats and reduces thermal bridges and the formation of condensation.
- Reduces energy costs.
- Reduces pollution in cities.
- Microporous, allows substrates to breathe.
- Protects and renovates in a single operation.
- Very high UV resistance thanks to its special pigments.
- Solvent-free, non-flammable, and non-toxic.

> Surface Preparation

The substrates must be sound, clean, and dry, or with moisture that is not excessive and not permanent, in accordance with the applicable DTU 59.1 and 42.1 standards. After preparation, they should receive a preventive anti-fungal treatment: MOUSS 15 diluted at a ratio of 1 L to 29 L of water.

Substrates with traces of laitance:

Clean with a solution of 1L DECASTRONG to 4L of water, followed by rinsing or high-pressure cleaning.

Substrates with moss or algae:

Brush dry to remove the largest parts. Clean and treat with ACTIMOSS or MOUSSVERT.

Substrates with pollution blackening or greasy residues:

Clean and degrease with KENTIA.

Very porous substrates in concrete/render (old concrete tiles, fibrocement slate, façade render):

Apply the RESIFIX primer to stabilize and regulate the porosity of the substrate.

PROFESSIONAL USE ONLY PRODUCT

1600-4250



Key Information

- > Application: Brush, roller, airless spray
- > Ready to use
- > Average consumption: 2 m²/L
- > Number of coats: 2
- > Dust-free drying time: 1 hour at 20°C
- > Full curing time: 48 hours

Available in 8 colours



Actual colors to be confirmed with the color chart.

Safety Instructions

>

ISOLPEINT

Metal surfaces:

Any rust marks must be removed and treated with ADIRUST WHITE anti-rust primer.

Previously painted surfaces:

They must be clean and well-adhered to the substrate. If not, all paint must be stripped using DECAPALO G. Glossy paints must be dulled by sanding or with ECLAT pur, followed by rinsing.

All substrates:

Allow to dry for 24 to 48 hours after any water rinsing before applying ISOLPEINT.

Unsuitable substrates:

Not suitable for thick plastic coatings, liquid waterproofing systems, bituminous membranes, wood, lime-based plasters, or substrates previously treated with a surface water repellent. Not intended for use on non-porous surfaces such as glazed tiles, non-porous terracotta, natural slate, etc. Not suitable for floor application.

> Instructions for Use

Application of ISOLPEINT:

Do not apply at temperatures below +10°C or above +30°C.

Do not apply and protect the surface if rain is expected within 24 hours.

Protect all surfaces that should not receive the treatment. In case of accidental splashes, rinse immediately with water.

Ready to use. Before application, mix ISOLPEINT thoroughly using a slow-speed electric mixer (maximum 300 rpm).

Apply with a roller, brush, or airless spray.

It can be diluted with water up to a maximum of 5% (exceeding this may cause runs during application) to improve fluidity.

For airless spraying, use a 5'19 nozzle with a pressure between 100 and 150 bars.

IMPORTANT:

Do not exceed 170 bars during application, as this may reduce the product's thermal performance.

Apply in 2 crossed coats.

Interval between coats: 3 hours at 20°C and 50% relative humidity.

Total consumption: 400 to 600 ml/m² depending on substrate porosity.

For maximum effectiveness of thermal properties, do not cover the product.

- **SRI (Solar Reflectance Index) initially:** 112
- **SRI after 4000 hours aging according to NF EN ISO 16474-3:** 110
- **Reflectivity:** 90%
- **Emissivity:** 85%
- **Thermal conductivity:** 0.098 W/m.°C
- **Fresh appearance:** viscous liquid
- **Dry appearance:** matte, color of the shade
- **Density:** 0.75 ± 0.05 at 20°C
- **Bulk density (dry product):** 510 kg/m³
- **Dust-free drying time:** 1 hour at 20°C and 50% relative humidity
- **Full drying time:** 48 hours
- **Application temperature:** minimum 10°C
- **Substrate moisture:** maximum 5%
- **Ambient relative humidity:** maximum 75%
- **Cleaning before drying:** with water
- **Dry stripping:** DECAPALO G

> Safety Precautions

Do not spray in windy conditions.

Store protected from frost and extreme heat.

Shelf life: 12 months in unopened original packaging.

* Guarantees adhesion to the substrate and waterproofing for 10 years from the date of sale, provided the application complies with current technical documents, standards, and DTU regulations.

PRODUCT FOR PROFESSIONAL USE

1600-4250

CM | CONCEPT
MONACO

Le ONE Monte-Carlo
6 avenue Princesse Alice
Étage 2, Bâtiment G
98000 MONACO

+377 97 98 10 19
contact@concept-monaco.com
www.concept-monaco.com



> How it works ISOLPEINT

> To understand

>Exceptional properties!

> Hollow glass microsphere technology creates a thin insulator with exceptional properties that blocks the transmission of both heat and cold in the building structure.

Helps reduce energy demand for air conditioning in summer and heating in winter.

Reduces the urban heat island effect.

> Modes of transfer of heat

> Radiation

*Repels radiant heat
(REFLECTIVITY).*

> Thermal Conduction

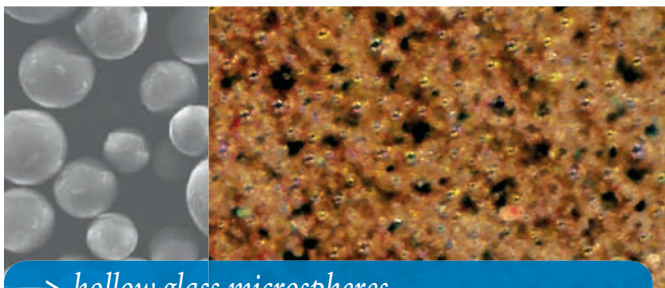
ISOLPEINT significantly reduces heat and cold conduction in materials.

Advantages!

- Allows, in a single application, to improve thermal comfort year-round and to give new life to your home.

>A genuine anti-condensation solution for interior use!

- The surface coated with ISOLPEINT does not become cold, which greatly minimizes condensation formation.



> hollow glass microspheres

- Reflectivity index: 90%
Radiation is reflected away
- Emissivity: 85% of the absorbed heat is re-emitted.
- Thermal conductivity: 0.098 W/m.°C
Initial Solar Reflectance Index (SRI): 112.
- SRI after 4,000 hours of aging, according to NF EN ISO 16474-3: 110

>In summer

*ISOLPEINT reflects heat,
helping you stay cool.*

> in winter

ISOLPEINT limits the spread of cold



> = WTWXfe

> 8ADKAGD
DAA8~
83E367

971 1VY Zcf
[cj Yfba Ybh
JbVWbhj YgZcf
Wta a YfWU UbX
YfWUfmbi gY
vi JXJb g'

> ISOLPEINT
[BdsUf[UW

ISOLPEINT WZS` UWfZW
fZW S`Ua_ Xdf aXtg[V` Yež

DVWfeca'SddSV[Sf[a` '1] VS fdgVY [dddy
fa TafZ ZWfS` VUaV

FZWfEA>B7;@F fdSF_ Wf [ebWVWf'k
eg[fWXdTafZ` W S` VdWahSfWdaX
S` VSeSWZ

- Isolant Thermique.
- Imperméable.
- Indice de réflectance solaire :
- SRI (Indice de Réflectance Solaire) à l'état initial : 112.
- SRI après vieillissement de 4000H selon NF EN ISO 16474-3 : 110.
- Esthétique.
- En phase aqueuse, sans solvant.

All of these factors make ISOLPEINT eligible
for government incentives for
commercial-use tertiary buildings.

> 100% Waterproof



> 100% Waterproof for effective protection of your assets.

> Its water-repellent properties provide effective protection against rainwater infiltration, damage caused by freeze/thaw cycles, the risk of flaking and exfoliation of certain porous materials, and the growth of algae.

> V@ÁÇæ æ^•Á Á~!Á/@!{ æÁ•~|ææ *Á
Ü•ā

"Áæ Á^Áæ]|āāÁ} Áæææ^•Á!Á[[•ÉV!Á^, Á
&[]•d` &ā } Á!Á^ } [çææ } Á! [b&•É } Á[cÁ
!^•ā^ } æÁ@ { ^•Áæ āÁ ā`•cāÁ~ āā *•É
"Á! [c&•Á[[Á æ!]! [ā *Á^•c{ •Á[{ Á^: ^É
cæ & &^•É

O: a^ai S` VebZWfUS^YSee [UabZWVWZ a^Ykž
O? [Uhbache S^ai efZWgTfSfWa TdSfZW
OI SFWZWVWf, Lā fS[eS ZkvabZaT[USWf
bch[V] YWUWf dāeS` Uwa i SFWs` VV[d] S` V
dWgU YfZWVWb WfaXfS[eS` VS`SWchi fZ
O 7j UWWfSWf[a` S`[egSf[a ž
O Eřd` YSVZWa` bcbWfWž
O #'" i SFWZSeW ea hWZWW

3hs[STWba^ade
*_ SffWZSWW

> Òç&/|^} dWXā āÁ ^æ@!Á^•āæ &^É
> Áā ā @āā] ^ææ &^Á^ æ^Áā ā É



* Actual shades to be confirmed on the color chart.

* Garantie 10 ans : caractère imperméable et adhérent aux supports.

* Dans tous les cas se reporter au cahier des charges du produit avant la mise en œuvre.

CODE 1608



Key Benefits

- > Reflects solar radiation.
- > Significantly reduces heat gain in the building.
- > Reduces energy costs.
- > Waterproof.
- > Protects existing bitumen waterproofing from degradation caused by solar radiation and heat.
- > Eligible for government incentives for commercial-use tertiary buildings.



REFLECTHERM

Waterproof Thermal Paint

For Roofs and Terraces

REFLECTHERM is a 2-in-1 white coating with the following properties:

Thermal and insulating, designed to reflect solar radiation and prevent roof overheating.

Waterproof and flexible, providing long-lasting protection for the substrate against water.

This "Cool Roof" system helps maintain cool indoor temperatures, improve thermal comfort in buildings, and reduce energy consumption (up to 40% savings on air conditioning).

Thanks to its high reflectivity/emissivity, it blocks solar radiation and prevents heat from entering buildings.

It is an excellent additional insulation solution for buildings as it allows, in a single application, to renovate, waterproof, and enhance roof insulation.

Contains a hydrophobic agent that provides excellent resistance to water and dirt, and an antifungal agent that delays the growth of dirt, algae, and lichens.

REFLECTHERM is specifically designed for industrial or commercial building roofs. It is suitable for the following substrates: healthy bituminous waterproofing membranes, clean metal substrates (steel or aluminum sheeting), and fiber cement substrates.

Substrates must have a minimum slope of > 1%, without any flat areas.

> Key Qualities

- Provides thermal comfort inside the building.
- Reduces energy costs.
- Protects existing bitumen waterproofing from degradation caused by solar radiation and heat.
- Reflects sunlight and promotes energy savings by reducing cooling needs.
- Reduces the urban heat island effect.
- Up to 20 degrees cooler on the roof.
- Up to 10 degrees cooler indoors during heatwaves.
- Reduces pollution levels in cities.
- Extends the durability of existing roof coatings.
- Eligible for government incentives for commercial-use tertiary buildings.
- Forms a flexible, waterproof film.
- Fungus-resistant treated film.
- Microporous: Allows materials to breathe.
- Limits performance loss due to heat for photovoltaic panels.
- Excellent resistance to dirt and weathering.
- Very good UV resistance.
- Complies with the VOC Directive (Volatile Organic Compounds), limiting solvent use.
- Non-flammable, non-toxic.

...



Useful Information

- > Application with a roller or airless spray
- > Ready to use
- > Coverage: 600 to 800 g/m²
- > Number of coats: 2
- > Initial SRI (Solar Reflectance Index): 104
- > SRI after aging: 98
- > Reflectivity: 84%
- > Emissivity: 88%
- > Flexibility/elongation: 150%

REFLECTHERM

> Surface Preparation

The surfaces must be clean, cohesive, dry, or slightly damp without excess or permanent moisture, in accordance with the current DTU 59.1 standards.

The surfaces should be cleaned with **KENTIA** or **NET ECLAIR**. Algae growth should be removed with **ACTI MOUSS**. Wait at least 48 hours before applying REFLECTHERM after high-pressure rinsing or cleaning.

Metal roof coverings (such as steel or aluminum sheets): Rust stains must be removed and treated with the anti-rust primer **ADIRUST BLANC**. If the surface shows no rust, use the **PRIMASOL** primer.

Bituminous membrane, shingles, and fiber cement substrates: Apply **REFLECTHERM** directly, diluting the first coat with 15% water to fix and/or regulate the substrate's porosity.

> APPLICATION

Application of REFLECTHERM:

Ready to use, mix thoroughly before use with a low-speed electric mixer (maximum 300 rpm). Apply with a brush, roller (18 mm nap), or using AIRLESS spray. For better flow, it can be diluted with water up to 15%.

When using AIRLESS spray, use a 5'23 nozzle with a pressure range between 140 and 180 bars. Apply in 2 crossed coats with a minimum interval of 6 hours at 20°C.

Metal Roof Covering:

- Apply the **ADIRUST BLANC** or **PRIMASOL** primer at a rate of 150 to 250 g/m².

- Apply 2 pure coats of **REFLECTHERM**. Total coverage for 2 coats: 600 g/m².

Bituminous Membrane, Shingles, and Fiber Cement Substrate:

- Apply the first coat of **REFLECTHERM** diluted with 15% water at a rate of 400 g/m².

- Then, apply 1 pure coat of **REFLECTHERM** at a rate of 400 g/m².
Total coverage for 2 coats: 800 g/m².

REFLECTHERM can also be applied to facades (Class D3) on render, old paint, or old thick plastic coatings (RPE) that are well-adhered to the substrate.

On render, apply the first coat diluted with 15% water, and on paint or RPE, apply 2 pure coats.

Total coverage: 800 g/m².

Note: Depending on the exposure and slope of certain roofs, the preventive quality against the growth of algae, moss, and lichens may vary. For periodic maintenance, apply a spray of **MOUSS 15**, which will not affect **REFLECTHERM**.

Characteristics at 20°C and 50% relative humidity
AFNOR Classification (NF T 36-005):

Family I – Class 7b2

Color: White

Dry Appearance: Satin

Initial SRI (Solar Reflectance Index): 104

SRI after 4000 hours of aging per NF EN ISO

16474-3: 98

Reflectivity: 84%

Emissivity: 88%

Flexibility/Elongation at Break: 150%

Total Coverage: 600 to 800 g/m² depending on substrate

Dust-Free Drying Time: 2 hours at 20°C

Interval Between Coats: 6 hours at 20°C

Complete Drying Time: 24 hours

Application Temperature: 10°C minimum to 30°C maximum

Ambient Relative Humidity: 75% max

Substrate Humidity: 5% max

Fresh Cleaner: Water

Dry Stripping: **DECAPALO G**.

> Precautions

Refer to the provided safety data sheet.

Do not apply in windy conditions using a spray.

Protect all surfaces that should not receive the treatment.

In case of accidental splashes, rinse with water.

Do not apply if rain or frost is expected within the next 24 hours.

For maximum thermal effectiveness, do not cover the product.

Store in a frost-free area, away from excessive heat, between 10°C and 30°C.

PROFESSIONAL USE ONLY

1608-4270

> FROM DESIGN TO MANUFACTURING
OF TECHNICAL PRODUCTS...

CM | **CONCEPT
MONACO**

Le ONE Monte-Carlo
6 avenue Princesse Alice
Étage 2, Bâtiment G
98000 MONACO

+377 97 98 10 19
contact@concept-monaco.com
www.concept-monaco.com

